



GAMELINE TAPING MACHINE OWNER'S MANUAL



Phone: 616.241.3040
Fax: 616.241.3356
www.emackmfg.com
sales@emackmfg.com
© 2023 EMack Mfg

Operation

With the Gameline Taping Machine, there are no tools needed to make line width adjustments. The most heavy-duty, easy to use and dependable taping machine on the market today will create lines from ½" to 5" wide.

STRAIGHT LINE GAME LINING

1. Be sure to select the proper tape guides (2) for the tape you will be using. The Gameline Taping Machine is designed to take tape widths of ½", ¾", 1" and 2". The extra tape spools are located inside the tape dispenser.
2. Adjust the tape guides to the proper width by simply sliding the guide in or out on the grooved shaft. For example, if you want to make 2" wide lines, set the tape guides at the 2" mark on the measuring rule.
3. To operate the tape dispenser, slide a roll of tape over the tape dispenser. Feed a 12" piece of tape (sticky side down) over the tape guide and under the front wheel on the same side. Repeat this for the other tape dispenser as well.
4. Point the line pointer on the pre-marked string, chalk or laser line and begin moving the machine forward using slight pressure to make sure the tape is sticking to the floor. Make sure to pay close attention to the marked line. Repeat steps 1-3 for all straight-line game lining. Some trimming will be needed where corners meet.
5. If you are simply going to re-stripe over your existing line, use the re-taping guide to follow the lines on the floor.

Operation

RADIUS LINES

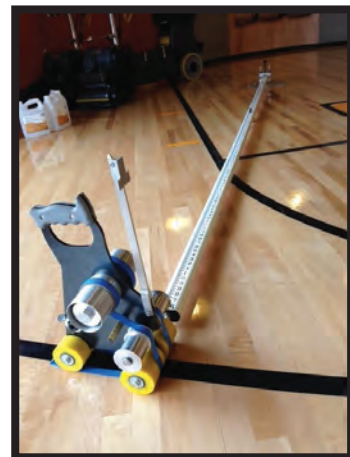
1. When mapping out the 3-point line, the semi-circle and half-court circle, use the radius tools and poles.
2. After finding the start point as indicated in the MFMA Game Markings Manual provided, locate the correct combination of poles to do the desired radius. The poles simply screw together at the ends. One of the 2' poles is equipped with a quick connect for attaching the poles to the Gameline Taping Machine. This will attach on the left side of the machine, when standing behind it.
3. When the pole assembly is ready, attach the radius tool to the poles at the desired length. Simply measure your distance needed and tighten the thumb screw on the radius tool at the desired measurement on the poles. One person will have to hold down the radius tool while another maneuvers the taping machine.

NOTE: For longer sections of poles, use the telescopic pole kit. (#301-001, sold separately) If you have any questions, please call your distributor.

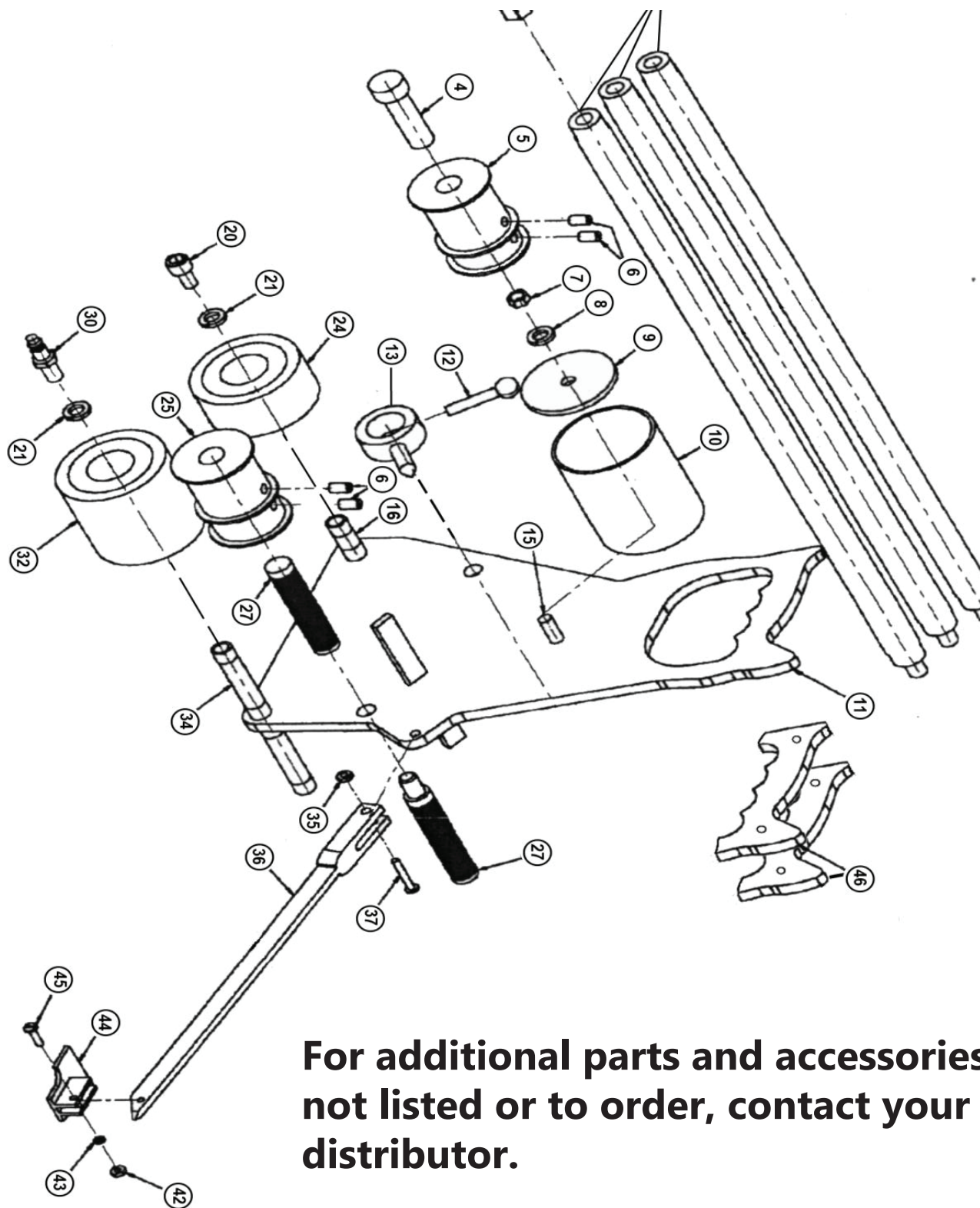
Tips and Tricks

SINGLE PERSON LINING

The Pivot Point Helper (301-030), when used with a Gameline Taping Machine and telescopic pole kit (301-001), can be used to layout an entire gym floor with just one person. Below the machine is shown set up to tape a floor individually with the telescopic pole kit and pivot point helper kit.



Expanded Parts View



For additional parts and accessories not listed or to order, contact your distributor.

Parts List

	1-300	Gameline Taping Machine w/std Poles
1	300-001	Standard 2ft Pole
3	300-003	Female Coupler
4	300-004	Spool Holder Bolt
5	300-005	Spool 18mm x 1 3/4
6	300-006	Detent Ball
7	803-6	Nut
8	806-5	Lock Washer
9	300-009	Spool Cup Washer
10	300-010	Spool Cup
11	300-011	Gameline Body
12	808-5-1-75	Thumb Screw
13	300-013	Standard Pivot Point
15	300-015	Threaded Rod
16	300-016	Rear Axle New Style
20	812-5-1-75	Axle Bolt
21	807-6	Washer
24	300-024	Rear Wheel New Style
25	300-025	Spool 1 x 1 1/2
27	300-027	Guide Spool Holder
30	300-030	Male Coupler Axle Bolt
32	300-032	Front Wheel New Style
34	300-034	Front Axle New Style
35	804-3	Nut
36	300-036	Pointer Bar
37	804-4-1-75	Bolt
42	802-1-3	Nut
43	802-6	Lock Washer
44	300-044	Guide Pointer Foot
45	810-2-2-37	Bolt
46	300-046	Handle

WHY WORK TWICE AS HARD?

Increase Efficiency with an EMack Ryder!

Ryder Cart for Sanders



Aimed at helping industry professionals increase efficiency while reducing effort, the EMack Ryder Cart allows users to operate up to three sanders simultaneously, reducing sanding time and removing strain on the body. Single phase and 3-phase are available for 230V or 480V of power. For more information or to order, visit www.emackmfg.com or call 616.241.3040.

Equipment Refurbishing



EMack also offers equipment refurbishing for equipment used in the wood floor industry!

Pre-Shipment Checklist

We Take Pride in Our Work. The Following Checks Have Been Completed Prior to Shipment:

Customer: _____

Serial #: _____

Date of Manufacture: _____

Body ☐

Rule Measurement ☐

Wheels ☐

Pointer Bar ☐

Spool ☐

**Guide
Spool
Holder** ☐

Tested By: _____

QC By: _____

Packaged By: _____

Ship Date: _____

Comments: _____



Phone: 616.241.3040

Fax: 616.241.3356

www.emackmfg.com

sales@emackmfg.com